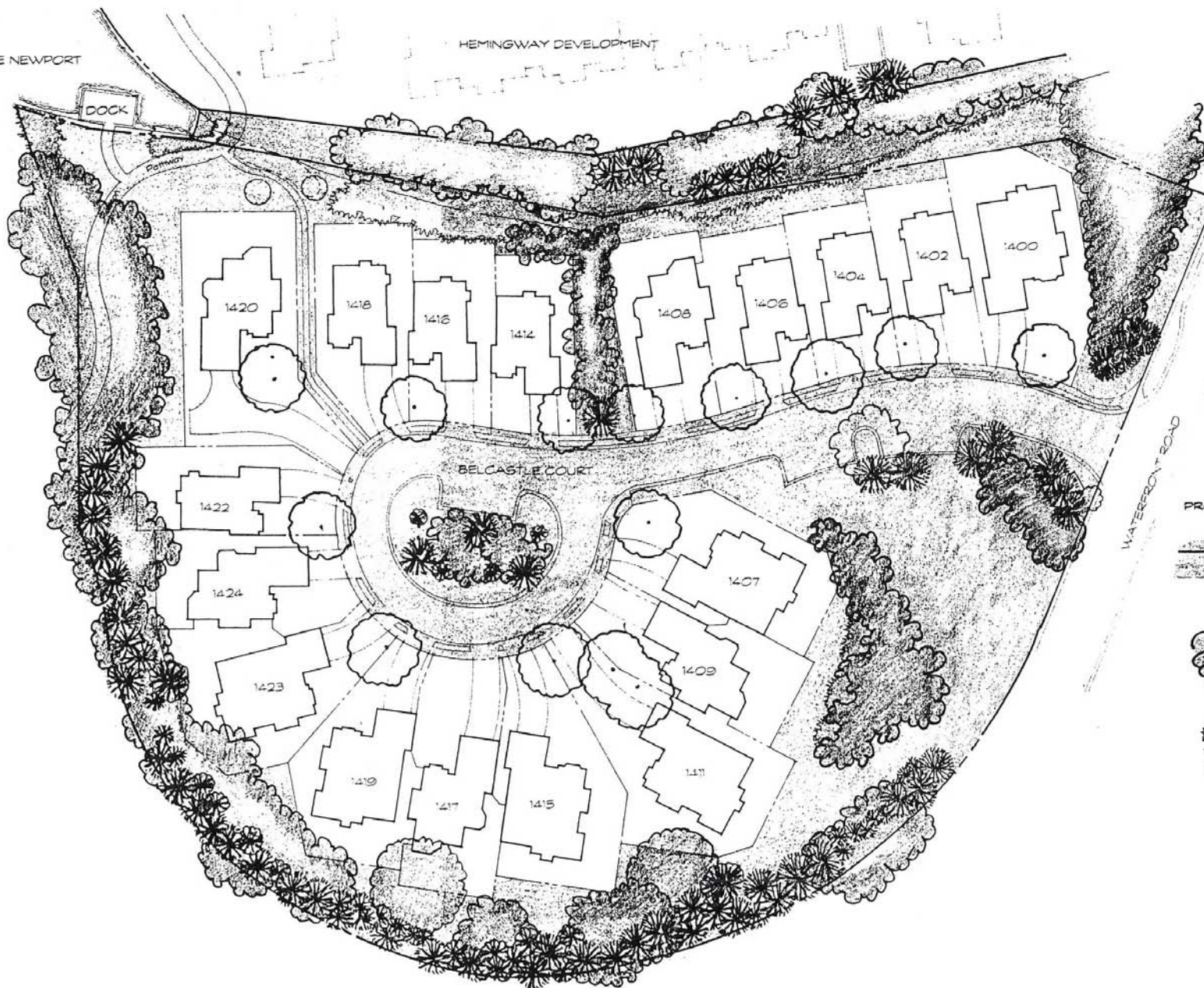



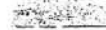

LAKE NEWPORT


HEMINGWAY DEVELOPMENT





APARTMENTS

**PROPERTY BOUNDARIES & EXISTING VEGETATION  
LEGEND**

-  RESTON LAND
-  BELCASTLE COMMON AREAS
-  HOMEOWNERS

- WOODS**  
Natural and introduced deciduous trees:
- |   |                      |
|---|----------------------|
|  Tulip Poplar | Sour Gum             |
| Hickories   | Oaks                 |
| Flowering Dogwood   | Maples               |
| Redbud  | Birches              |
| Sassafras   | Sumac                |
| Devils Walking Sticks   | Servicberry/Shadbush |

- EVERGREENS**  
All introduced as screens and barriers:
- |  |                |
|--|----------------|
|  Black Pine | White Pine     |
| Austrian Pine  | Norway Spruce  |
| Eastern Red Cedar  | Fosteria Holly |
| Norfolk Island Holly   | American Holly |
| Magnolia   |                |

- MEADOWS**  
Natural and introduced native shrubs and wildflowers:
- |   |                   |
|---|-------------------|
|  Red-osier Dogwood | Viburnum          |
| Blackberries  | Winterberries     |
| Goldenrods  | Black-eyed Susans |
| Tick-seed Sunflower   | Joe-pye Weed      |
| Asters  | Daylilies         |
| Butterfly Weed  | Corral            |
| Sun Drops   | Bee Balm          |

WATERFRONT ROAD